



REC# #: 752794

RECORDED 5/8/2019 AT 1:18 PM BK# 2620 PG# 1836  
Debra K. Lee, CLERK OF LARAMIE COUNTY, WY PAGE 1 OF 1

# STATE OF WYOMING CORNER RECORD

(In compliance with the CORNER PERPETUATION AND FILING ACT, Wyoming Statutes, 1997 Section 33-29-140, et. seq., and the Rules and Regulations of the Board of Registrations for Professional Engineers and Professional Land Surveyors)

## WEST QUARTER CORNER SECTION 4, T. 18 N., R. 63 W., 6TH P.M., LARAMIE COUNTY, WYOMING

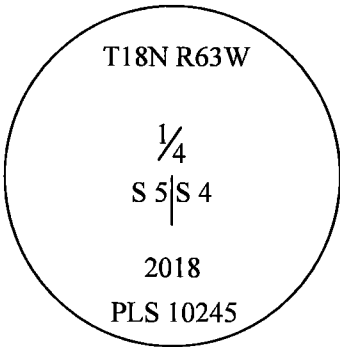
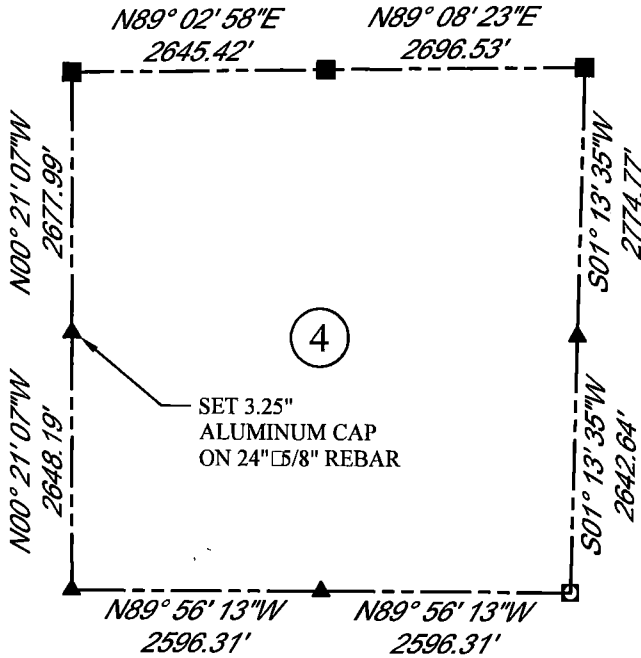
GLO: SET A SANDSTONE 16X10X4, 10 IN. DEEP, MARKED 1/4 ON W. SIDE FOR 1/4 SEC. COR.

FOUND: NOTHING. SET ALUMINUM CAP AT PROPORTIONATE (SINGLE) DISTANCE



SCALE: NONE  
NORTH DETERMINED BY  
G.P.S OBSERVATIONS

SET 3.25" ALUMINUM CAP ON #5 REBAR, 14" BELOW SURFACE OF COUNTY ROAD SHOULDER, STAMPED AS SHOWN. PLACED A MOUND OF STONES IN FENCE LINE ON EAST SIDE OF COUNTY ROAD. SET 1 MAG NAIL IN FENCE POST 102' NORTHEAST.



### LEGEND:

- FOUND BLM CAP
- FOUND USFS CAP
- FOUND STONE
- FOUND PRIVATE MONUMENT
- ◆ CALCULATED POSITION
- ▲ SET MONUMENT (LS10245)
- SECTION LINE

DATE OF FIELD WORK: 10/4/2018 OFFICE REFERENCE: MERIDEN

### CROSS INDEX DIAGRAM

	1	2	3	4	5	6	7	8	9	10	11	12	13	14	15	16	17	18	19	20	21	22	23	24	25	
A																										
B																										
C			6		5				●	4		3		2		1										
D																										
E																										
F																										
G			7		8				9		10		11		12											
H																										
J																										
K																										
L			18		17				16		15		14		13											
M																										
N																										
O																										
P			19		20				21		22		23		24											
Q																										
R																										
S																										
T			30		29				28		27		26		25											
U																										
V																										
W																										
X			31		32				33		34		35		36											
Y																										
Z																										

WOOD  
2615 AVIATION DRIVE  
SHERIDAN, WY 82801  
PH: 307-675-6400



THIS CORNER RECORD WAS  
PREPARED BY ME OR UNDER  
MY DIRECTION AND  
SUPERVISION,  
SEAL AND SIGNATURE

